

RPS

**RPS Energy
HSE and Risk Management Group
Major New Features Version 4**



BowTieXP - Major New Features in Version 4

This page is intentionally blank

BowTieXP - Major New Features in Version 4

Table of Contents

- 1 LEGAL DISCLAIMER5
- 2 INTRODUCTION5
 - 2.1 RISK ASSESSMENT ON THE HAZARD / TOP EVENT..... 5
 - 2.2 THREAT OR CONSEQUENCE CATEGORIES..... 6
 - 2.3 SUPPORT..... 8
- 3 CONTACT US8

BowTieXP - Major New Features in Version 4

Other informative documents in this series:

Available upon request: (Also see the Downloads and Library pages at www.bowtiexp.com.au)

FOR THOSE CONSIDERING BOWTIEXP:

- AHT02065 BowTieXP Risk Management made easy PP
- AHT02065 BowTieXP FAQ
- AHT02065 BowTieXP Evaluation Download (this document)
- BowTieXP-QuickStartManual-3.6.8AdvancedBlack
- AHT02065 BowTieXP Black Module

FOR THE BOWTIEXP USER:

- AHT02065 BowTieXP How to Access Host ID
- AHT02065 BowTieXP Technical Getting Started Guide
- AHT02065 BowtieXP Installation Requirements
- AHT02065 BowTieXP Network+Group Install Guide
- BowTieXP-QuickStartManual-3.6.8AdvancedBlack
- AHT02065 BowTieXP How to Manage Unhandled Exception Errors
- AHT02065 BowTieXP Tips and Tricks

INCIDENT INVESTIGATION:

- How To Access Host ID- IBB

BowTieXP - Major New Features in Version 4

1 LEGAL DISCLAIMER

Use of this material is conditional upon your prior understanding of and agreement to abide by these terms. All information contained in this product is intended as general advice only and does not claim to address the needs or circumstances of specific organisations. Every effort has been made to ensure that to the best of our knowledge, all of the information presented is accurate.

No Guarantee or Warranty

Governors and RPS state that all information in this material is provided "as is", with no guarantee of completeness, accuracy or suitability, nor that the results obtained from the use of this information, the methodologies and the BowTieXP software will be satisfactory or suitable for the user. No warranty of any kind, express or implied, including, but not limited to warranties of performance and fitness for a particular purpose, is offered.

Seek Professional Advice

All users are advised to seek professional advice before making any safety or risk management decisions.

No Liability for Decisions

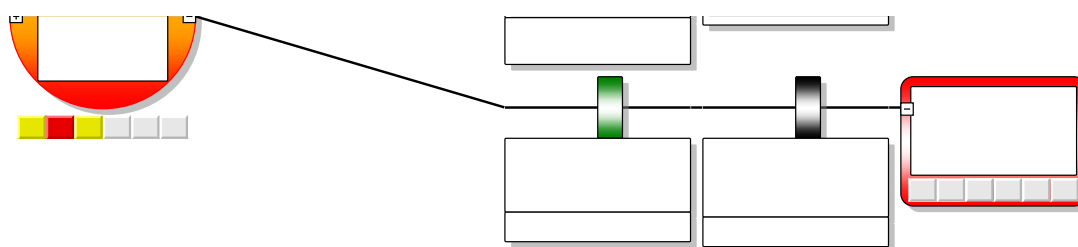
In no event will Governors and RPS, their related entities, joint venture partners, agents, distributors or employees thereof be liable to you, any organisation or anyone else for any decision made or action taken whilst relying on the information in this product, or for any consequential, special or similar damages, even if advised of the possibility of such damage.

2 INTRODUCTION

This is an informal document prepared for specific client enquiry. It is not a complete representation of new features emerging in BowTieXP.

2.1 RISK ASSESSMENT ON THE HAZARD / TOP EVENT.

Inherent or residual RA can be shown on the Top Event as well as on each consequence. See the boxes underneath the Top Event.

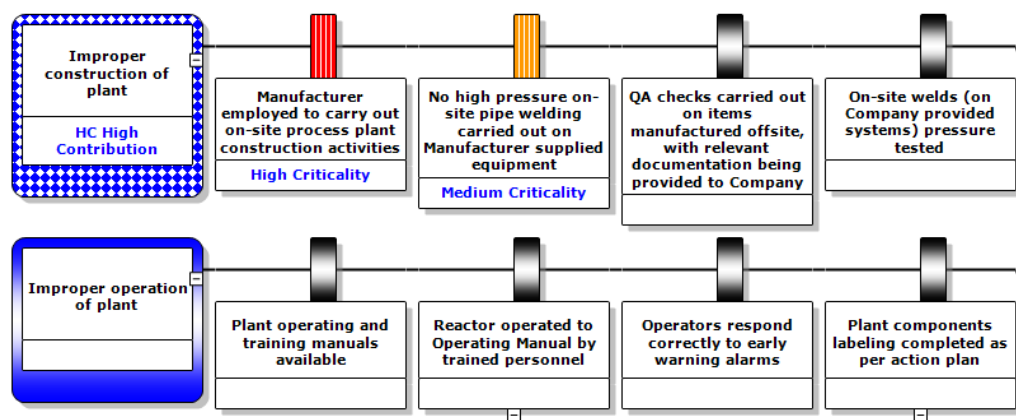


BowTieXP - Major New Features in Version 4

2.2 THREAT OR CONSEQUENCE CATEGORIES

Threats or Consequences can be set to show some user-defined category, and optionally coloured as per user-defined pattern/colours (example of “HC High Contribution” below).

- 1) Control Criticality indicated by colours and / or text on controls – also as below.
 - 2) Spreadsheets in the new BowTieXL edition.
- (Extracted from the RPS BowTieXP FAQ document:)



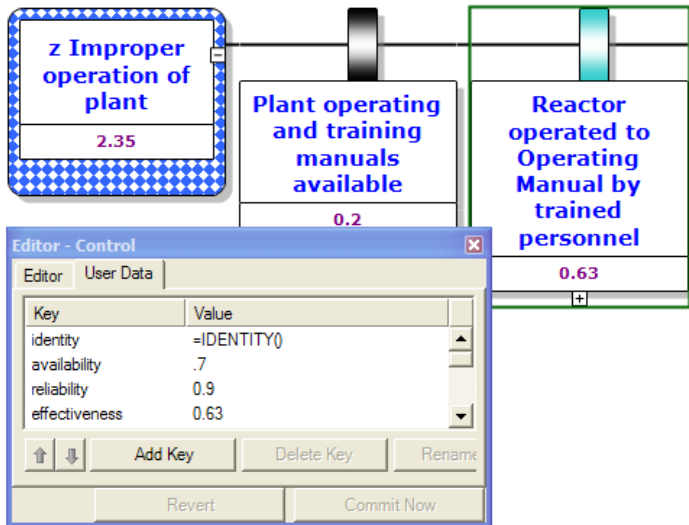
“BowTieXL is the latest edition of BowTie software from Governors B.V., and one which will become very useful for organisations that wish to build or manipulate data with inbuilt spreadsheets. Originally designed to satisfy calls for SQRA functions, BowTieXL has gone beyond expectations: beginning with a standard inbuilt tabular presentation of the BowTie diagram and reference data, the user can add columns, populated them with any formulae or text, and is able to perform almost any formula function that can be done in a Microsoft Excel spreadsheet.

Apart from being able to do calculations based on the bow-tie model data, you can also use BowTieXL to:

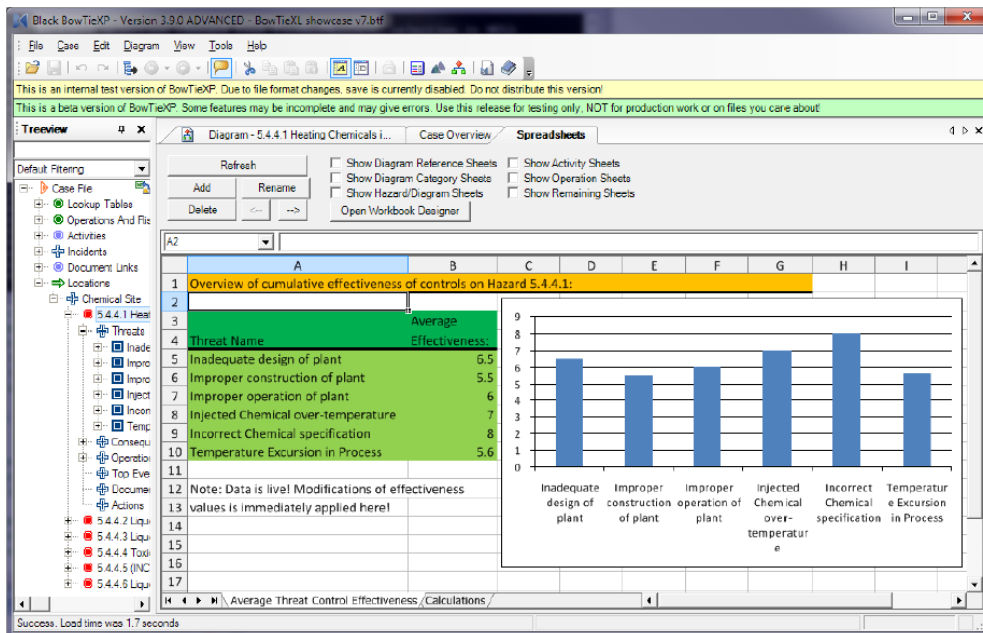
- Store reference information in spreadsheets, which are stored in the case file
- Add notes and calculations which serve as underpinning the analysis in the case file
- Add general reference information into the case file
- Use the tabular representation of the BowTie model data to quickly edit or add data in bulk by simple copy and paste.
- Use Excel formulas to create custom aggregated displays of data on the diagram
- Use BowTieXP as an auditing tool
- Bulk adding of data from external data sources such as Excel -
- And many more uses.

User-defined data fields can be created for any BowTieXP diagram element, and formulae used perform arithmetic or text functions (such as joining data into text strings). These can be displayed under any element such as controls, threats or consequences. An example is that a net control effectiveness (NCE) score could be calculated from values the user defines, and the result displayed on a threat.

BowTieXP - Major New Features in Version 4



Graphs can also be built within the software, and the raw data or graphs exported for further manipulation or incorporation into reports.



BowTieXL is like a spreadsheet module that can be purchased ‘on top of’ either the Standard, Advanced or Navigator editions. Therefore if you wish to have the Advanced edition features with BowTieXL (and an organisation using the BowTieXL functions would probably also use some of the Advanced features) be sure to specify BowTieXL Advanced. BowTieXL Standard is of course available, and the Black module can also be added to one of these choices.”

BowTieXP - Major New Features in Version 4

2.3 SUPPORT

If you have any issues installing the software or need help with the software itself, please contact us at (bowtiexp@rpsgroup.com.au) or by phone on +61 8 9211 1150 (GMT +8).

Thank you for reviewing BowTieXP software. Other editions are available in the BowTieXP Risk Management and Incident Investigator range. RPS welcome your comments and enquiries – please direct them to bowtiexp@rpsgroup.com.au.

3 CONTACT US

We look forward to receiving your questions and comments.



38 Station Street, Subiaco 6904, Western Australia

PO Box 465, Subiaco 6004, Western Australia

T +61 8 9211 1111 F +61 8 9211 1133

E bowtiexp@bowtiexp.com.au W

www.bowtiexp.rpsgroup.com.au

A member of the RPS Group: www.rpsgroup.com



Leiden, The Netherlands

T +31 71 512 87 53

E support@bowtiexp.com W www.governors.nl